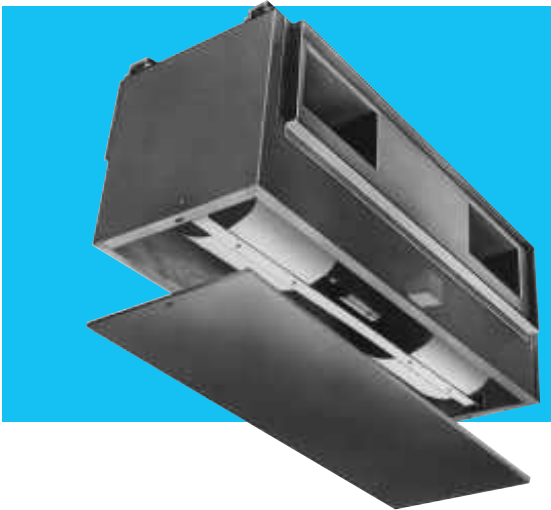


LARGE CAPACITY ZEPHYRS



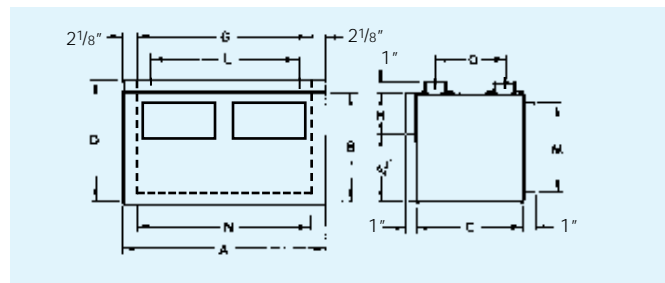
Penn Ventilator certifies that the Z14, Z15 models shown here in are licensed to bear the AMCA Seal. The ratings shown are based on tests and procedures performed in accordance with AMCA Publication 211 and comply with the requirements of the AMCA Certified Ratings Program.



DIMENSIONAL DATA

MODEL	A	B	C	D	L	O	OUTLET		INLET		EST. WEIGHT
							G	H	M	N	
Z14	38	14 ¹ / ₂	14 ¹ / ₂	15 ¹ / ₂	30 ¹ / ₂	7 ⁵ / ₈	33 ³ / ₄	7 ³ / ₄	12 ¹ / ₂	36	96
Z15	45 ¹ / ₂	16 ¹ / ₂	16 ¹ / ₂	17 ¹ / ₂	34 ¹ / ₂	10	41 ¹ / ₄	9 ³ / ₄	14 ¹ / ₂	43 ¹ / ₂	140

All dimensions in inches. All weights in pounds.



Z14, Z15 models carry the UL label and are listed with Canadian Standard Association.

ZEPHYR MODEL NO.	RPM	INLET AREA	OUTLET AREA	WHEEL SIZE		FAN CAPACITY - CUBIC FEET PER MINUTE									
				DIA.	CIRCUM.	SP	0.100"	0.125"	0.250"	0.375"	0.500"	0.625"	0.750"	0.875"	1.00"
Z14 115/1/60 1/2 HP	1150	3.125 SQ.FT.	1.816 SQ.FT.	8 INCHES	2.09 FEET	CFM	2200	2195	2050	1870	1685	1425	880	285	
						SONES	7.9	7.9	7.6	7.1	6.8	6.7	6.6	6.4	
						BHP	.56	.56	.54	.49	.45	.39	.26	.15	
	1060	3.125 SQ.FT.	1.816 SQ.FT.	8 INCHES	2.09 FEET	CFM	2025	2015	1835	1645	1400	880			
						SONES	7.2	7.2	6.9	6.4	6.3	6.0			
						BHP	.44	.43	.40	.36	.33	.22			
	980	3.125 SQ.FT.	1.816 SQ.FT.	8 INCHES	2.09 FEET	CFM	1865	1845	1630	1410	1015	280			
						SONES	6.6	6.6	6.2	5.8	5.7	5.3			
						BHP	.34	.34	.31	.28	.20	.10			
24 MM	880	3.125 SQ.FT.	1.816 SQ.FT.	8 INCHES	2.09 FEET	CFM	1660	1605	1375	1055	255				
						SONES	5.8	5.8	5.4	4.8	4.6				
						BHP	.25	.24	.21	.17	.07				
Z15 230/1/60 1 HP	1030	4.38 SQ.FT.	2.739 SQ.FT.	9 INCHES	2.36 FEET	CFM	3290	3260	3100	2920	2720	2510	2260	1930	1140
						SONES	9.5	9.5	9.4	9.0	8.7	8.6	8.3	8.2	8.1
						BHP	1.10	1.10	1.05	1.0	.96	.91	.85	.75	.52
	1000	4.38 SQ.FT.	2.739 SQ.FT.	9 INCHES	2.36 FEET	CFM	3185	3155	2990	2800	2590	2365	2085	1625	
						SONES	9.4	9.4	9.2	8.7	8.4	8.3	8.0	7.7	
						BHP	1.0	1.0	.95	.91	.86	.81	.73	.61	
	950	4.38 SQ.FT.	2.739 SQ.FT.	9 INCHES	2.36 FEET	CFM	3015	2980	2805	2600	2375	2115	1755		
						SONES	8.8	8.8	8.6	8.2	7.8	7.6	7.4		
						BHP	.86	.85	.81	.77	.72	.66	.56		
24 MM	880	4.38 SQ.FT.	2.739 SQ.FT.	9 INCHES	2.36 FEET	CFM	2775	2735	2535	2305	2045	1715			
						SONES	8.0	7.9	7.8	7.4	7.1	6.9			
						BHP	.68	.67	.63	.59	.54	.46			

Performance shown is for installation Type A: Free inlet, Free outlet. Performance ratings do not include the effects of the appurtenances in the airstream. Speed (RPM) shown is nominal. Performance is based on actual speed of test. Other speeds listed are obtainable by using Lek-Trol model LT40 for fan model Z14 and Lek-Trol LT35 for fan model Z15. Some ratings are in accordance with AMCA Bulletin 301-90. Performances shown include outlet ducts in place for Z14 and Z15. The AMCA Certified Ratings Seal applies to air capacities only. Model Z15 is also available with 1HP 208/230/1/60 with LT35 and 1HP 115/1/60 with LT60. Model Z14 is also available, or 1/2 HP 208/230/1/60 with LT35 and 1/2 HP 208/230/3/60 or 460/3/60.